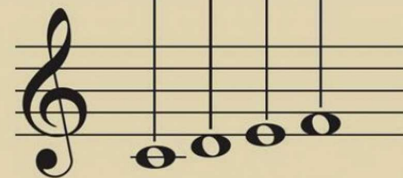
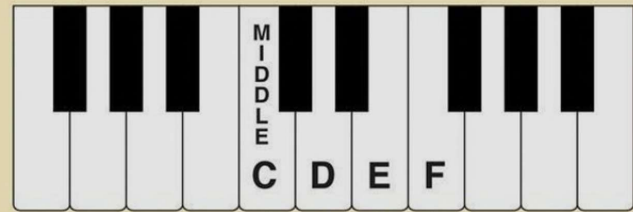


Treble Clef Note - F

This **F** is the first space of the treble staff.
It is a **2nd** above E.



Play and say: **C D E F**
line-space-line-space

Legato

Legato means smooth and connected, with no break in the sound. To play *legato*, one finger goes down as the previous finger releases.

A **slur** is a curved line over or under a group of notes. It indicates *legato*.

- Play this example. Listen for a smooth, connected sound.



Repeat starting on LOWER C's.

- Tap (or clap) the rhythm. Count aloud, "1-2-3."

- Repeat, tapping only on beat 1 of each measure.

Midnight Ride

Fast, urgent

1 on ___?

2 on ___?

5

9

13

17



Can you play this piece counting aloud, “1-2-3” for each measure?
Which beat is the strongest? **beat 1** **beat 2** **beat 3** (circle one)

Teacher Duet: (Student plays 1 octave higher)

R.H. 3/4 L.H. 1/4